



绿色生态 家居装饰材料设备系列
Green Ecological Home Decovation Materials Equipment Series



地址：上海市曹安公路4315号（G15国家高速曹安公路出口）
电话：021-69595913 13817975703
Add: No.4315 Caoan Rd.,Huangdu Industrial Zone Shanghai, China
[Http://www.jwell.cn](http://www.jwell.cn) www.jwell-extruder.com

邮编(p.c):201804
传真 (Fax): 86-21-69592317
Postal code: 201804
Fax: 86-21-69592317
E-mail: sales@jwell.cn



PVC木塑快装墙板/软晶墙板/竹木纤维集成墙板生产线

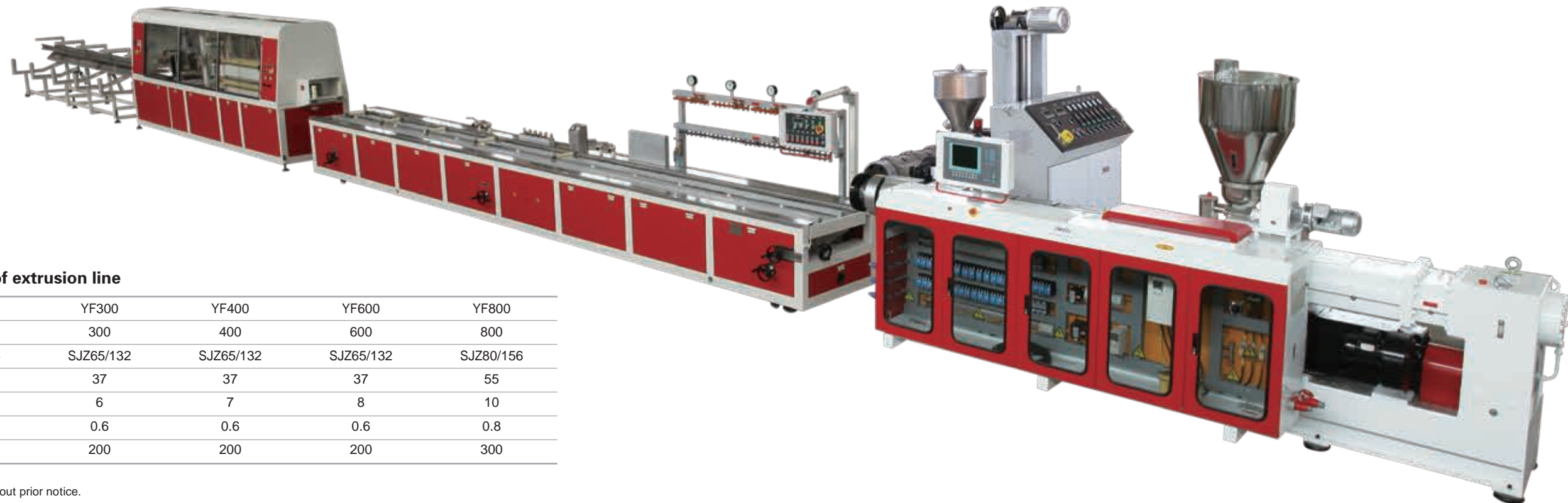
Fast Loading Wallboard/Soft Crystal Wallboard/ Bamboo Fiber Integrated Metope Extrusion Line

该生产线主要由锥双挤出机、挤胶机、真空定型台、牵引机、切割机、接料架组成。生产线采用智能控制，自动化程度高，设备稳定，操作简便，生产效率高。通过更换不同规格的模具可以生产多种规格、尺寸、形状、厚度的快装墙板。我司拥有丰富的生产经验，为客户免费提供上门安装调试以及操作培训和原料配方，确保客户能够自主生产。

This extrusion line mainly contains conical twin screw extruder, glue extruder, vacuum calibration unit, haul-off unit, cutter and stacker. It adopts intelligent control system, high automatic system, with feature of stability, easy operating and high efficiency. By changing different types of mold, it can produce all kinds of fast loading wallboard with different types, sizes, shapes, thickness. With rich production experience, JWELL can provide on-site installation and debugging services freely, including operation train and raw material formula, to insure the customer can operate autonomously.

特点：快装墙板又称竹木纤维集成墙板是由竹木纤维做为基材，树脂材料作为表面工艺做出的一种广泛用在家庭、工程等墙面装饰的材料，花色媲美传统壁纸，同时又兼有护墙板的优点，作为一种新型的替代墙漆、壁纸的墙面装饰材料。快装墙板是一种集合环保、隔热、防潮、保温、防火、隔音、时尚等多种元素的新型装饰材料，材料轻便，方便安装。可以解决海边墙面容易长霉，墙面脏了易擦洗等问题，同时达到工程房屋建筑物防火的要求。

The feature: Fast loading wallboard is also called bamboo fiber integrated metope which use bamboo fiber as base material, resin material use as the surface craft material is widely used in metope adornment material of family life, project and so on, its surface color effect can reach traditional wallpaper, besides it protects the wall. Regards as a new product is gradually replacing wall paint, wallpaper metope adornment material. Fast loading wallboard is a new type decoration material with advantage like environment friendly, heat insulation, dampproof, heat preservation, fireproof, sound insulation, fashion, etc element, portable, easy to assemble. So it can solve the problem of the metope easy to mildew and metope dirty wash easily, meanwhile it also reach requirement of engineering buildings fire protection.



生产线主要技术参数 Parameters of extrusion line

设备型号Type	YF180	YF300	YF400	YF600	YF800
规格(mm)	200	300	400	600	800
主机型号Extruder type	SJZ51/105	SJZ65/132	SJZ65/132	SJZ65/132	SJZ80/156
功率(kw)	18.5	37	37	37	55
用水量(m³/h)	5	6	7	8	10
用气量(Mpa)	0.6	0.6	0.6	0.6	0.8
产量(kg)	100	200	200	200	300

备注：以上规格参数如有变更，恕不另行通知。
Note: The specifications are subject to change without prior notice.

PVC仿大理石板挤出生产线 PVC Imitation Marble Board Extrusion Line



UV 仿大理石板

- a、板材表面覆仿大理石纹薄膜，或者热转印仿大理石纹并 UV 固化处理，良好的抗划伤性 耐刮擦性；
- b、板材花色、品种多样 施工方便；
- c、在室内墙体装潢中替代大理石等天然石材，良好的耐老化、抗紫外线、耐黄变，绿色环保、无辐射。

UV Imitation Marble Bboard:

- a、Board surface coat imitation marble film, or laminate imitation marble and through curing treatment, good anti scratch, antiscratch resistance;
- b、Board with variety of color, it 's convenient to construct;
- c、Instead of marble etc. natural stone in the interior.



主要技术参数 Parameters of extrusion line

种类 Species	透明片材 Transparent Sheet	非透明片材 Un-transparent Sheet	UV仿大理石 Imitation Marble Bboard
制品厚度 Product thickness (mm)	0.5 - 3	0.5 - 5	4 - 5
制品宽度 Product width (mm)	1220	1220	1220
适用原料 Raw material	PVC	PVC+additives	PVC
产量 Output (Kg/h)	200 - 450	220 - 400	400

备注：以上规格参数如有变更，恕不另行通知。
Note: The specifications are subject to change without prior notice.

PS/PVC仿大理石（发泡）型材生产线 PS/PVC Imitation Marble (Foam) Profile Production Line



YF 系列 PS/PVC 仿大理石(发泡)型材生产线，主要有单螺杆主挤出机和配套共挤机，冷却水槽，热转印机组，牵引机，切割机，翻料架组成，整条生产线配有进口 ABB 交流变频器控制，进口 RKC 温空仪表等元器件，具有塑化好，产量高，使用可靠的特点。其中热转印机组是根据进口样机改进设计而成，它主要采用热压印的方式，将色带上的涂料压印在发泡 PS/PVC 异型材上。该机外观美观、性能可靠、使用方便、烫印精确、吸附力强。且调节手轮可以压印各种不同形状的异型材。该设备主要和塑料挤出机、牵引机、切割机等配套使用，是目前塑料机械行业新开发的一种最新的配套辅机。

YF Series PS/PVC Imitation Marble (Foam) Profile Production Line, consists of single screw extruder and the special co-extruder, with the cooling water tank, hot stamping machine system, haul-off unit, and stacker. This line with imported ABB AC inverter control, imported RKC temperature meter etc. and features of good plasticization, high output capacity, and stable performance etc. The hot stamping machine system combined foreign technology, by the hot stamping embossing method, transfer the coating layer from the film to the PS/PVC foamed profile. The machine with good appearance, stable performance, accurate & easy operation. By adjust the embossing wheel the machine can work on various of different profiles. Working together with the main extruder and other extrusion down steam equipments, this line is popular as the latest developed producing line.



主要技术参数 Parameters of extrusion line

型号 Model	YF1	YF2	YF3	YF4
主机 Extruder	JWS65	JWS90	JWS100	JWS120
共挤机 Co-extruder	JWS35	JWS45	JWS45	JWS45
生产制品宽度 Products width	3inch	4inch	5inch	6-8inch
配套热转印机 Hot stamping machine	8组	10组	10组	12组
生产线速度 Speed	2-6m/min	2-6m/min	2-6m/min	2-6m/min

备注：以上规格参数如有变更，恕不另行通知。
Note: The specifications are subject to change without prior notice.

PVC半结皮（木塑）发泡板、共挤发泡板生产线

PVC Semi-Skinning(WPC) Foam Board、Co-Extrusion Foam Board

PVC发泡板又称为雪弗板和安迪板，其化学成分是聚氯乙烯，所以也称为泡沫聚氯乙烯板

PVC半结皮发泡生产工艺是结合自由发泡工艺和结皮发泡工艺研发的新型工艺，具有设备工装简洁、配方简便、工艺操作难度小等特点。

PVC foam board also named Snow board and Andy board, the chemical component is polyvinyl chloride, also can be named foam polyvinyl chloride board.

PVC Semi-Skinning foam manufacturing technique is combine free foam technique and semi-skinning foam to develop new technology, this equipment have advanced structure、simple formulation、easy operation etc. features.

PVC半结皮发泡板的特点 The feature of PVC Semi-Skinning foam board

1、防水、阻燃、耐酸碱、防蛀、质轻、保温、隔音、减震的特性

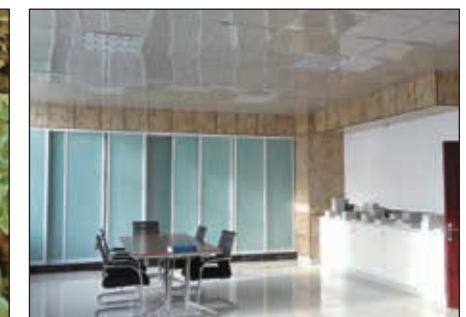
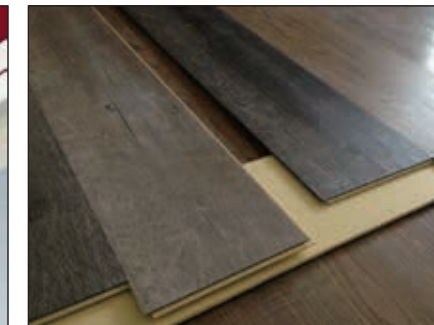
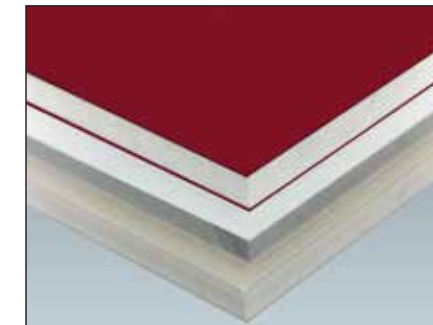
Waterproof、anti-flame、anti-acid& alkali、anti-moth、light weight、heat preservation、sound insulation、shock absorption.

2、和木材同等加工，且加工性能远远优于木材

The process same with wood, but manufacturing performance is much better than wood.

3、是木材、铝材、复合板材的理想替代品

Ideal substitute for wood、aluminum、composite board.



PVC 半结皮发泡、木塑发泡板材生产线主要技术参数 Main technical specification

机型 Model	半结皮发泡 Semi-skinning foaming board extrusion line			共挤发泡 Core foaming board extrusion line
制品宽度 Production width	1220mm	1560mm	2050mm	1220mm
制品厚度 Production thickness	5-20mm	8-18mm	8-15mm	5-20mm
挤出机规格 Extruder model	SJZ80/156	SJZ92/188	SJZ92/188	SJZ80/156+SJZ65/132
最大挤出产量 Capacity (Max.)	400kg/h	550kg/h	550kg/h	500kg/h
主电机功率 Main motor power	75kw	132kw	132kw	75kw+37kw

备注：以上规格参数如有变更，恕不另行通知。Note:The specifications are subject to change without prior notice.